

**Kylin**<sup>®</sup>  
SAUNA



# Kylin Steam Sauna Instruction Manual

Version: 11-2024



At Kylin Infrared Saunas, our vision is to transform lives by providing exceptional infrared sauna experiences that promote physical rejuvenation and mental revitalization.

# Table of Content

**TABLE OF CONTENT ..... 3**

**SAFETY INSTRUCTIONS ..... 4**

**INSTALLATION INSTRUCTIONS..... 5**

**STRUCTURE AND COMPONENTS..... 6**

**GENERAL GUIDE FOR INDOOR STEAM SAUNA ..... 7**

**HEATER CABLE CONNECTION ..... 14**

**USAGE GUIDE ..... 16**

**WARRANTY INFORMATION..... 18**

## Safety Instructions

1. Indoor saunas should be placed under an awning or sheltered area, even when using a sauna cover.
2. To reduce the risk of injury, children should not be allowed to use the sauna unless they are closely supervised at all times.
3. To prevent potential hazards, do not insert objects like fingers or sticks into the heating tube or plate.
4. Do not use or store flammable gases or liquids, such as hair spray, oil paint, or gasoline, near the equipment.
5. To prevent electric shock, do not touch the power control panel or any electrical components with wet hands.
6. Do not operate the equipment in prolonged high temperatures.
7. After 4 hours of continuous use, shut down the equipment for at least half an hour before restarting.
8. Use the device with caution after consuming alcohol.
9. Individuals with hemophilia or those prone to bleeding should avoid using this product.
10. Persons with health conditions or medications should consult their physicians before using sauna.
11. Excessive temperatures have a high potential for causing fetal damage during the early months of pregnancy. Pregnant or possibly pregnant women should contact their physician before using the sauna.
12. Persons using medications should consult a physician before using the sauna since some medications may induce drowsiness while others may affect heart rate, blood pressure, and circulation.
13. Please exit immediately if you feel uncomfortable, dizzy or sleepy.
14. Never sleep inside the sauna while the unit operates.
15. Do not attempt any repair without consulting the manufacturer first. Unauthorised repair attempts will void the manufacturer's warranty.

**WARNING:** The use of alcohol, drugs, or medications prior to or during the sauna session may lead to unconsciousness.

## Installation Instructions

Please read the following directions carefully. The sauna installation may require a minimum of 2 people. You should not try to install the sauna on your own as damage will easily occur.

**NOTE: The plug is not included; a certified electrician is required to install the power.** Proper installation requires the services of a licensed electrician so the sauna can be connected to your mains. Due to the high-power requirements of this unit, a standard 10AMP wall outlet will not provide sufficient power.

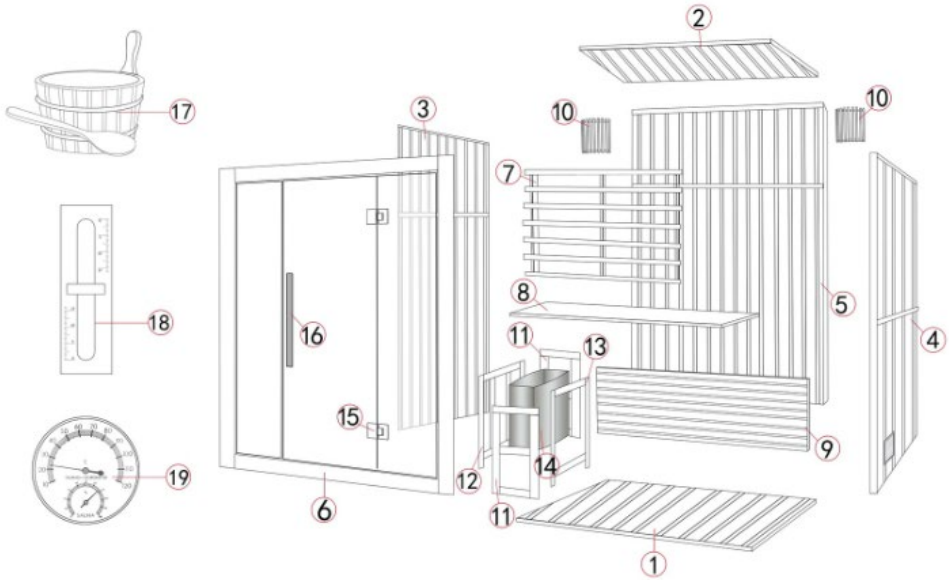
### Caution

- 1- No plumbing or plumbing fixtures should be placed in the sauna.
- 2- Install the sauna on a completely level surface.
- 3- Keep the sauna away from any potential hazards, including any water source or liquids. Select a dry, suitable location for the sauna installation.
- 4- **The indoor sauna room is best placed indoors, such as bathroom, pool area, or it can be placed outdoors where only fully covered areas, such as on a deck, terraces or balconies to protect it from the rain, moisture and other elements in order to maintain the naturally untreated Canadian Hemlock finish.**
- 5- Do not cover the heaters with towels or clothing to prevent overheating and potential fire hazards.
- 6- Do not place any items inside or on top of the sauna.
- 7- Avoid touching the heaters during or shortly after use, as hot surfaces may cause burns.
- 8- Keep the seat dry to prevent damage.
- 9- A qualified electrician must perform installation and repairs.
- 10- Flammable objects and corrosive chemical substances should be kept far away from the sauna.

Your sauna will come packaged **in one or more boxes**. Please make sure that you open the boxes face up. Be mindful of the fragile parts and glass enclosed during the opening process.

# Structure and Components

Below are pictures of each panel for the steam sauna. This is a for the general reference. **Other models vary.**



NO	Name	QTY
1	Floor Panel	1
2	Ceiling Panel	1
3	Left Panel	1
4	Right Panel	1
5	Rear Panel	1
6	Front Panel	1
7	Backrest	1
8	Bench	1
9	Bench Support Panel	1
10	Lamp Cover (Excludes Lamp)	1or2
11	Stove Frame A	2

NO	Name	QTY
12	Stove Frame B	1
13	Stove Frame C	1
14	Sauna Stove	1
15	Hinge	2
16	Door Handle	1
17	Bucket & Ladle	1
18	Thermometer	1
19	Sand Timer	1
20	Sauna Stone	1
21	Glass Seal	1
22	Screw M3.5*40	15

# General Guide for Indoor Steam Sauna

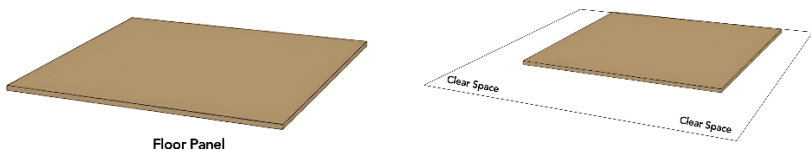
This installation is a general instruction for most models; the structure may vary between models. Please refer to the correct article for a specified model.

## 1. Where to Start

Lay the boxes flat on the ground and open them carefully. Please remove each part slowly to avoid breaking fragile parts, such as glass doors.

## 2. Floor Panel

Place the floor panel flat on the desired location. Make sure to leave a space around the side walls for one person to stand and install the side panels (Figure A-1). You can slide the sauna a bit once it's completely next to a wall.



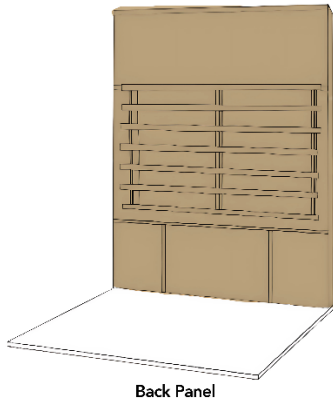
*Figure A-1: Floor Panel*

## 3. Back Panel

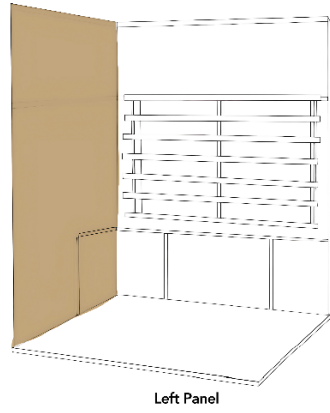
Place the right panel on the back end of the floor panel (Figure A-2). At this point, another person should hold the rear panel until the next connection is made.

## 4. Left Panel

Install the left panel as shown in the image below. Make sure the tops of both panels are flat and level (Figure A-2).



Back Panel

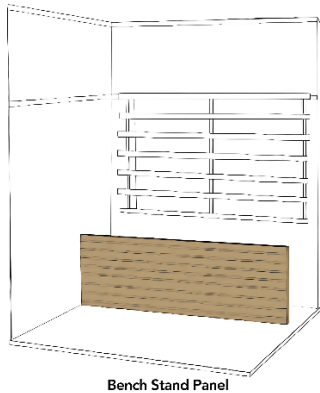


Left Panel

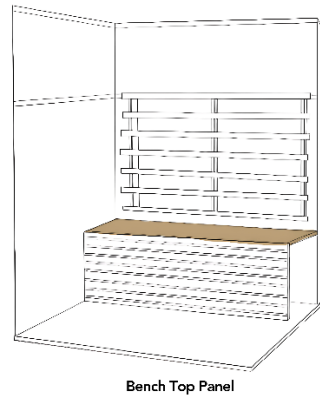
*Figure A-2: Back Panel and left panels*

## 5. Seating Bench

Slide the bench stand panel between the two vertical guides on the side panels.



Bench Stand Panel



Bench Top Panel

*Figure A-3: Installing the Bench*



**Tip:**

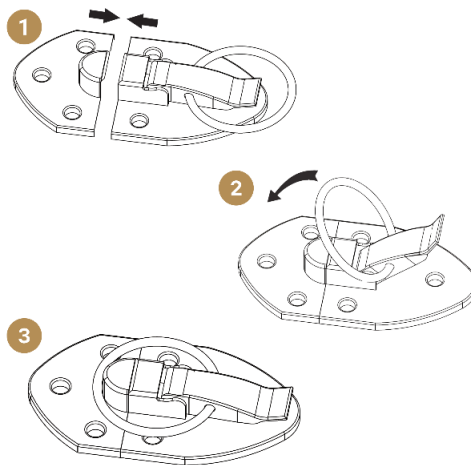
- A person can stand inside the sauna to match the bench stand with the vertical guide on the right panel and level the corners for easier installation. If the lower lock is not connecting, make sure the bench stand is not blocking the panel by aligning it with the vertical guide.

## 6. Connecting the Panels:

Kylin Steam Sauna uses the Latch Lock System to connect the side of the sauna panels (Figure G-1). Please use the instructions below as a reference guide for connecting the sauna panels.

### A. Latch Lock System:

The Latch Locking System is two buckles that lock together by passing the main loop over the opposite side and locking the latch (Figure G-1). When the back and side panels are all together on the floor panel, you can now close and latch it.



*Figure G-1: Latch Lock System*



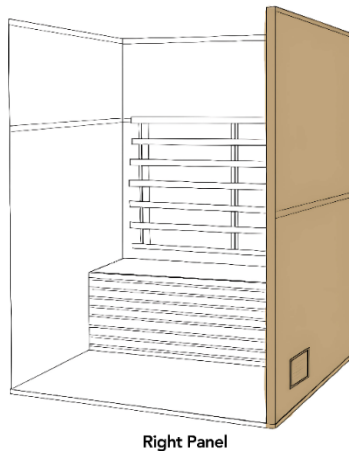
Steel Interlock - Hanging Buckle

**To connect two panels, follow these few steps:**

1. Align the door or lid properly with the latch.
2. Push the latch hook into the latch slot until it clicks securely.
3. Ensure the latch is fully engaged to prevent accidental opening.

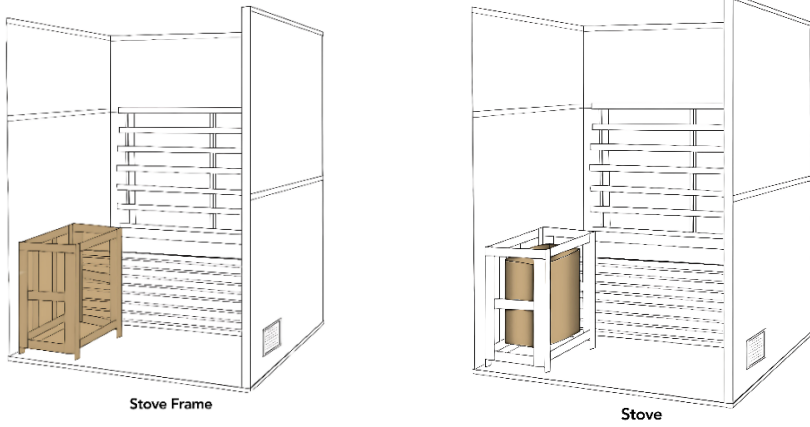
## 7. Right Panel

Install the right panel as the image below (Figure A-4). Make sure the top of all the panels is flat and levelled.



*Figure A-4: Right Panel*

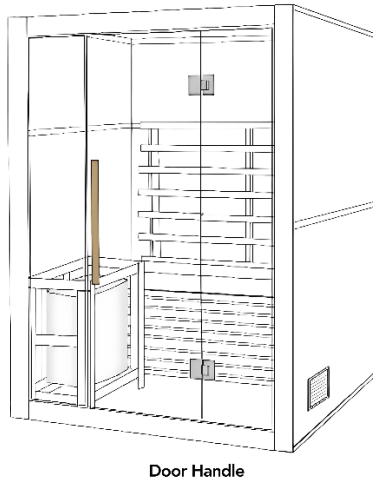
## 8. Install Stove Frame



*Figure A-5: Install the Stove Frame and Stove*

## 9. Front Panel

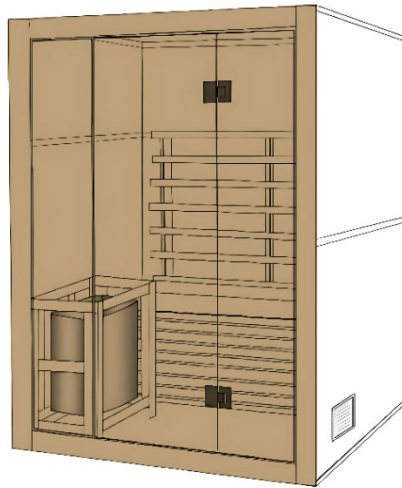
Install the door handle before installing the front panel.



Connect the front panel to both side panels as in the image below (Figure A-6).

**Tips:**

- Make sure to align the corners of the two side panels and the edges of the front panel.
- The front panel is heavy because of the glass door. At least two people are needed to lift it.
- **For the latch locking system**, latch the front panel with the left and right panels in the corners. Please take caution with the glass door.
- Please also make sure to put pressure on the top and bottom corners of each side to ensure the locks are connecting.



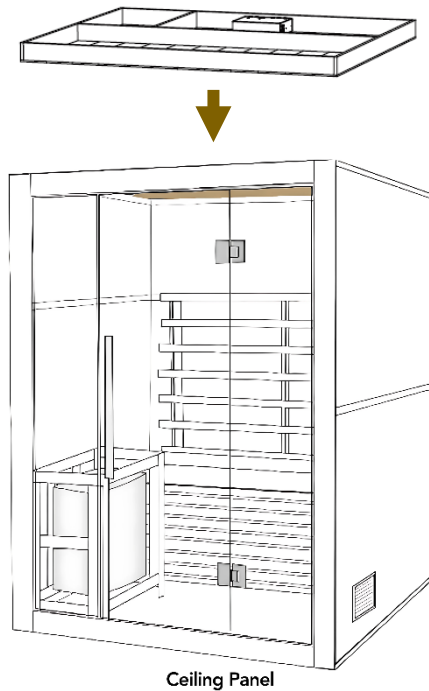
Front Panel

*Figure A-6: Install the Front Panel*



## 10. Top Panel

- Raise the top panel over the sauna body. While you are placing the internal top panel, **make sure all lighting wires (if provided) are slipped through the corresponding holes of the internal top panel.**
- Using screws to fix the top panel of each side to the entire sauna.

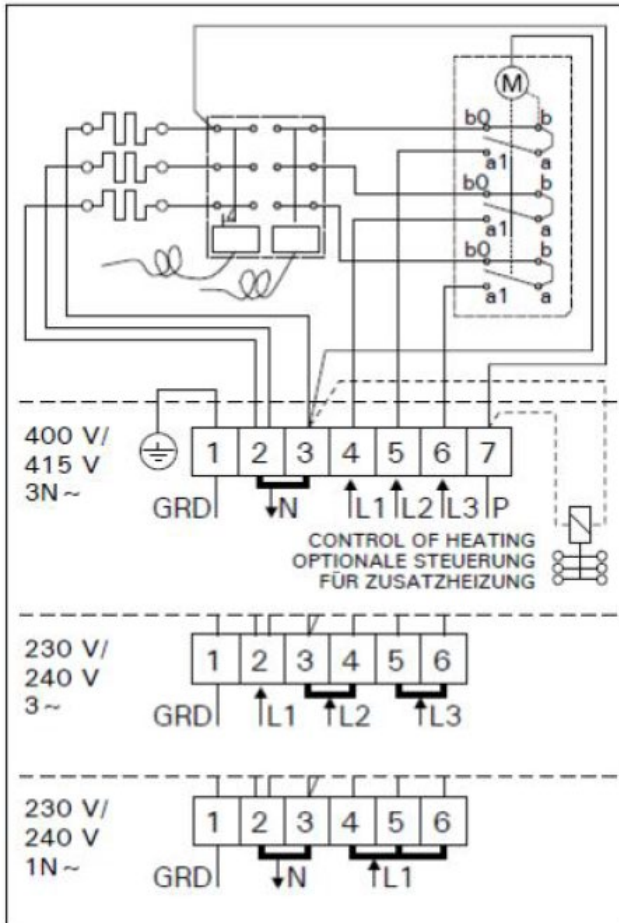


Connect all the wires and connectors to the corresponding outlets on the internal top panel for external lighting connection. **A certified electrician is required to install power and lighting.**

**- Sauna Installation Completed –**

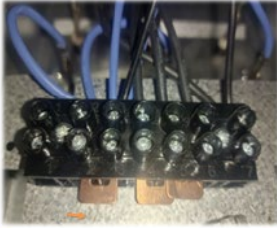
# Heater Cable Connection

Please read the heater manual carefully before oven cable installation. Install the steam heater by a licensed electrician.





Please check the below electrical connections for Harvia Heater



Connect the internal 2# and 3# terminals with copper sheet, and connect the 4#, 5#, and 6# terminals with copper sheet.



MAIN  
Power Line

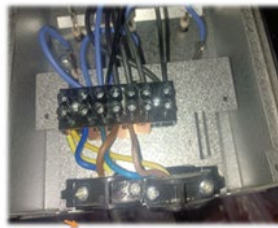
lighting line



The yellow-green wire is connected to the 1# terminal point.



The blue wire is connected to the 2nd and 3rd terminal points.



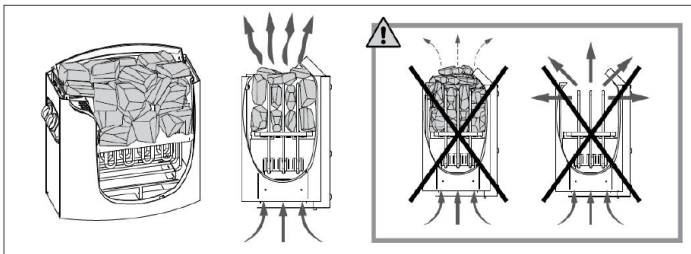
The brown wire is connected to terminal points 4 and 5



Securely tighten the wires.

## Stone Stone

Piling the sauna stones in correct way according to heater manual.



# Usage Guide

## Tips and Precautions

- **Set Your Heater:** Adjust your sauna heater to reach your preferred temperature, usually between **65 - 85°F**. If you're new to sauna use, start at the lower end and gradually increase the temperature as you get more comfortable.
- **Warm Up:** Take a quick shower or a brief dip in a hot tub or pool to warm your body up.
- **Use a Towel:** Sit on a towel to protect your skin from hot surfaces and absorb sweat. This also helps keep the sauna clean.
- **Cool Down:** Take a plunge in a pool, shower, snowbank, or lake — anything to cool your body down. Afterward, rest and allow your body to cool for **10-20 minutes**.
- **Re-enter the Sauna:** For your next session, you can sprinkle small amounts of water onto the sauna stones to create steam bursts. If water trickles through the heater to the floor, you're using too much water, but it won't harm the heater or sauna.
- **Repeat as Desired:** Continue alternating between the sauna and cooling down. After your final sauna session, relax for at least **20 minutes**. Shower with warm water first, then finish with cool water to close your pores.
- **Hydrate Well:** Regardless of your routine, it is essential to **stay hydrated** throughout your sauna experience.
- **Feel Rejuvenated:** Prepare to feel refreshed and energized for the day ahead or enjoy a great night's sleep! Their time but should avoid staying in the sauna for longer than **30 minutes** at a time.
- **Avoid Alcohol:** Do not consume alcohol before or during your sauna session, as it can increase the risk of dehydration.
- **Avoid Caffeine and Alcohol:** These substances can increase dehydration and should be avoided before using the sauna.



- **Be Cautious with Skin Conditions:** If you have sensitive skin, eczema, or dermatitis, the high humidity and heat may aggravate your symptoms.
- **Be Careful with Metal Parts:** The heater and metal fixtures can become extremely hot and may cause burns. Avoid direct contact.
- **Skip the Sauna if Sick:** If you have a fever, infection, or are feeling unwell, it's best to avoid using the sauna until you recover.

Enjoy your steam sauna session and feel the benefits of deep relaxation, detoxification, and improved circulation!

## Cleaning and Maintenance

- **First-Time Cleaning:** Before using your steam sauna for the first time, wipe down the interior surfaces with a damp cloth.
- **Initial Wood Odor:** It's normal for the wood to have a strong scent at first. Keep the door open while the sauna is heating up to help the smell dissipate quickly.
- **Use Towels to Protect Wood:** Place towels on the floor and benches during use to absorb perspiration and prevent staining on the timber.
- **Wood Expansion and Contraction:** Heat and moisture exposure may cause the wood to expand or contract, resulting in minor surface splits or gaps. This is a natural occurrence and not a defect.
- **Sauna Stone Maintenance:** Check the sauna stones every 3 months. Typically, stones need replacing after about 300 hours of use. For regular users (three times a week), replace the stones annually. For less frequent use, replace them every couple of years.
- **Glass Cleaning:** Clean the glass door with a standard glass cleaner to maintain a clear, streak-free finish.

# Warranty Information

The Sauna guarantees its products to be free of defects in material and workmanship.

Type	Purpose	Structural	Parts	Labor
Infrared Sauna	Residential	5 Years	5 Years	1 Year
	Commercial	1 Year	1 Year	6 Months
Traditional Sauna	Residential	5 Years	2 Years	1 Year
	Commercial	1 Year	1 Year	6 Months

This warranty extends only to:

1. a retail purchaser of a sauna or parts directly from Kylin Sauna;
2. the authorised wholesale purchaser of a sauna or parts directly from Kylin Sauna; or
3. a retail purchaser of a sauna or parts from Kylin Sauna

However, in the event of a sale, transfer or conveyance of a sauna or parts from any of the three (3) proceeding persons or entities, any rights, duties and obligations associated with this warranty shall be null and void and of no further force and effect. The sauna or parts must be purchased and used within one year of the purchased date.

**The sauna or parts must be placed in an indoor environment unless the sauna or parts are specifically designed for outdoor use. If an indoor sauna or parts are placed in an outdoor environment, warranty shall be null and void and of no further force and effect. The controls, heaters, electrical parts and wiring must be kept dry at all times and not exposed to any water or liquids. If the wood is deformed or damaged due to contact with water (including sweat, rain and any other liquid), it is not covered by the warranty.**

## Labour Warranty

Customers within **free service area** will enjoy free 1-year labour service for residential use and 3 months for commercial use. An extra call out fee is required after the warranty period and/or out of our service area. **Free on-stie service area is within 45 km from Blackburn VIC 3130, Hurstville NSW 2220 and Seventeen Mile Rocks QLD 4073.**

The warranty begins on the original date of purchase, and is valid only on products purchased and used in the pointed market. To receive warranty service, the purchaser must contact the Kylin Sauna to determine the problem and service procedures. Warranty service can only be performed by the Kylin Sauna authorised service center. The original dated bill of sale must be presented upon request as proof of purchase to the Kylin Sauna or the Kylin Sauna authorised service center.

In-home service will be provided during the warranty labour period subject to availability within the eligible area in Australia. In-home service is not available in all areas. To receive in-home service, the product must be unobstructed and accessible from floor level to service personnel. If during in-home service repair cannot be completed, it may be necessary to remove, repair and return the product. If in-home service is unavailable, the Kylin Sauna may elect, at our option, to provide for transportation of our choice to and from the Kylin Sauna authorised service center. Otherwise, transportation to and from the Kylin Sauna authorised service center is the responsibility of the purchaser.

This warranty covers manufacturing defects in materials and workmanship encountered in normal use of this product, and shall not apply to the following, including, but not limited to: damage which occurs in shipment; delivery and installation; applications and uses for which this product was not intended; altered product or serial numbers; cosmetic damage or exterior finish; accidents, abuse, neglect, fire, water, lightning or other acts of nature; use of products, equipment, systems, utilities, services, parts, supplies, accessories, applications, installations, repairs, external plumbing and leaks, external wiring, circuit breakers, fuses or connectors not supplied and authorised by the Kylin Sauna, or which damage this product or result in service problems; incorrect electrical line voltage, fluctuations, and surges; customer adjustments and failure to follow

operating instructions, cleaning, maintenance and environmental instructions that are covered and prescribed in the instruction book; consumable items including light bulbs.

The Sauna shall not be liable for the loss of use of the sauna or other incidental or consequential damages. Under no circumstances shall the Kylin Sauna or any of its representatives be held liable for injury to any person or damages to any properties. Specifications are subject to change without notice.

The sauna uses the highest quality wood in our product lines. All structures using wood are susceptible to minor dents, scratches and scuffing. This is normal and will not affect the integrity or operation of your sauna.

Wood is a living material that continues to respond to climate conditions, even after being manufactured into a sauna. Variations in the color or grain, and irregularities such fine cracks are part of the natural beauty of the wood and in no way should be considered defects. During normal operation, wood may crack slightly due to the changes in moisture level. This will not affect the structural integrity of the sauna.

Prior to shipping, the wood is inspected for consistency, colour and quality. Our saunas are shipped around the globe, and can experience slight blemishes, scratches or scuffs in transit. In most cases, these blemishes on the exterior of the sauna can be concealed by using a small amount of furniture polish, oil or other furniture treatment. The interior blemishes, scratches, or scuffs can be either left alone, sanded or a combination of gluing plus sanding. Please avoid any treatment containing benzene or a high concentration of alcohol.

### **Delivery**

Please accept your sauna may be shipped by separate parcels or pallets because of the specified allocation from carrier.

If the Buyer, or a representative of the Buyer, is not present to accept delivery at the time and place indicated by the carrier, the sauna will be left in a safe place, or the Buyer may be liable for costs of storage and re-delivery of the sauna and such costs will be payable prior to the re-delivery of the sauna.

ATTENTION: Kylin Sauna must be notified of any damage to your sauna **within two (2) business days** of signing the proof of delivery. Failure to notify Kylin Sauna support team within the established time frame will result in the owner taking full responsibility for cost of All Replacement Parts including shipping and handling fees.

### **Cancellation**

If an order is cancelled by the Buyer prior to dispatch of the sauna, all monies paid by the Buyer for that order will be refunded, a cancellation fee may be payable by the Buyer.

If a cancellation is made after the sauna has been shipped, then the buyer will be responsible for both way shipping charges.

### **Return & Refund**

If the sauna purchased are and you're not completely satisfied, please contact us at 1300 790 806 or email us at [contact@kylinaustralia.com.au](mailto:contact@kylinaustralia.com.au). Our experts will assist you and provide with the best solution for you.

Any return or refund request should be within 30 days of the shipping date to get an approval authorization. For change of mind return, the returned sauna must be unused, undamaged, in a good condition with packing materials, along with the shipping pallet. The only exception for return and refund is for units determined by Kylin Sauna to have a defect in materials and/or workmanship beyond repair.

Kylin may refuse to refund all or any portion of payment if buyer fails to fully comply with or violates the terms and conditions of this policy. All returns may be subject to a restocking fee of 20% of valued price.

Keep in mind that the condition of the item sent back is important, please help to repack it carefully. If you return the item used, damaged, missing parts, or

damaged during return shipping because it wasn't packaged correctly, Kylin may deduct from the refund to cover the loss in the item's value.

Once the item is delivered to us, your refund should be processed within 2 business days. Your refund will be sent to your original payment method and funds are usually available within 3-5 business days.

### **Legal Rights**




In Australia our goods come with guarantees that cannot be excluded under the Australian Consumer Law. You are entitled to a replacement or refund for a major failure and for compensation for any other reasonably foreseeable loss or damage. You are also entitled to have the goods repaired or replaced if the goods fail to be of acceptable quality and the failure does not amount to a major failure. So, as well as your statutory rights referred to above and any other rights and remedies you may have under any other laws relating to your Kylin product, we also provide you with Kylin warranty. It's important to note that this warranty is valid only in the country of purchase.

And if for any reason you wish to contact us, please do so at:

Kylin Customer Service Australia 1300 790 806



**Kylin**<sup>®</sup>  
SAUNA

-  1300 790 806
-  [kylinaustralia.com.au](http://kylinaustralia.com.au)
-  12/11 Mary St Blackburn VIC 3130