

Kylin[®]

Kylin Electric Multi-Function
Ceramic Pot Rice Cooker 2.0L

4 cups

AU-K1020



www.kylinaustralia.com.au
Phone Australia 03 9998 0999

Please read this instruction carefully before using this product.

Contents

| | |
|---|----|
| I. Safety Precautions----- | 2 |
| II. Performance and Characteristics ----- | 4 |
| III. Key Technical Parameters----- | 4 |
| IV. Parts Identification----- | 4 |
| V. Functions----- | 5 |
| VI. Clean and Maintenance ----- | 7 |
| VII. Chinese Manual中文說明----- | 9 |
| VIII.12 Month Warranty----- | 17 |

I. Safety Precautions

1. Please read the manual.
2. Always use your appliance from a power outlet of the voltage (A.C. only) marked on the appliance.
3. Use a power supply with qualified protective grounding to ensure personal safety.
4. Do not use near or on the surface of flammable or explosive articles; Do not use in damp environment or near other heat sources to avoid trouble and danger.
5. Use this product on a stable platform that is not accessible to children.
6. The product will emit steam when working. Do not put your face or hand near the steam outlet to avoid scald. Do not place objects that are afraid of steam above the product; Do not cover the steam outlet with a rag or similar items to avoid accidental product failure.
7. When the product is working, the outer temperature is high, please do not touch it to avoid scald.
8. The ceramic inner pot is only heated in this product. Do not heat the ceramic inner pot directly on open fire or on other stoves. And avoid hot ceramic parts in contact with cold water.
9. The amount of water added shall be between the lowest water level and the highest water level. Too little or too much water can cause trouble and danger.
10. When plugging in the power cord, it must be plugged in firmly to ensure good connection.
11. Always keep the plugs and sockets dry. Do not use wet hands to insert or remove the plugs to prevent electric shock.
12. Do not move the rice cooker while operating.
13. When the product is operating, there may be a slight diming sound inside the product, which is the sound of the appliance adjusting the firepower and does not affect the normal operation.
14. Press the "Keep Warm/Cancel" button in the working state and the product will return to standby state, that is, the display will show "00:00". If the product is working and the whole heating process has not been completed automatically. Under the circumstances, press the "Keep Warm/Cancel" button to force the heating to stop, and then try to start the function to continue heating again, the food in the ceramic inner pot may be burned or occurring other abnormal phenomena due to multiple heating. Please try to avoid such operations during daily use.
15. If the power is cut off halfway, the product will return to standby status and will need to be reset before it can continue to work.
16. Cooking rice/porridge with boiled water does not shorten the stewing time. It will only make the rice cooked or the porridge worse. Please pay attention to it.
17. After the product is operated, the temperature of the ceramic inner pot is very high. Please do not touch the ceramic inner pot to prevent scald.
18. When the product is used for the first time, the heating element may emit a slight peculiar smell; In addition, the display screen may flicker at the beginning of power-on. Please unplug and power up again. These two phenomena are normal.
19. The ceramic inner pot is fragile utensil. Please avoid collision with hard objects or fall from a high place, resulting in breakage and damage.
20. When stewing food or porridge, the proportion of food to water or rice to water should not be too high, otherwise it will easily cause the water dry, burning and other phenomena, serious affects will shorten the usage life of

ceramic pot. Do not inject water into the aluminum pot and confirming that there are no sundries in the aluminum pot, then keep the ceramic pot in contact with the aluminum pot.

21. When stewing claypot rice, the maximum amount of rice cooked in the pot should not exceed 3 cups of rice. Ingredients that cook slowly, such as meat and beans, should be added to the pot before starting to cook; ingredients that cook quickly, such as vegetables, can be added to the pot after five beeps ("Di-Di-Di").
22. Do not fill the water into the outer pot. Before use, please wipe the outside of the ceramic inner pot (especially the bottom) and the inside of the rice cooker. After confirming that there are no water drops or rice at the bottom of the inner pot, put the ceramic inner pot inside the rice cooker, then please adjust it slightly left or right to make sure the bottom of the inner pot contacts well.
23. Make sure the top cover is securely closed so as not to affect the stewing. It is forbidden to turn on the power when the cover is open with no ceramic inner pot, so as not to cause fuse blowing or failure and other accidents.
24. Always turn off the power and remove the plug before taking out the ceramic pot.
25. To prevent electric shock, do not soak wires, plugs or hosts in liquid.
26. Unplug the wire from the socket before use and cleaning. Detachable parts can be removed before allowing cooling.
27. Do not use the product with damaged wires or plug and if there is damage or faulty.
28. Use of accessories that are not recommended by the manufacturer may cause harm.
29. Don't use it outdoors.
30. Do not let the wires hang from the edge of a desk, counter and touch a hot surface.
31. Do not place the product on or near a hot gas, electric burner and in a heating furnace.
32. Care must be taken when moving products containing hot liquids.
33. Always connect the plug to the product before inserting it into the wall socket. When disconnecting, turn off the rice cooker before plugging off the wall socket.
34. Do not use this product for other purposes.
35. Caution risk of electric shock. Cook only in removable containers.
36. This appliance is not intended for use by children or people with physical, sensory, or mental defects or lack of experience and knowledge, unless they have been given supervision or instruction concerning use of the appliance by a person responsible for their safety.
37. Children should be supervised to ensure that they do not use this appliance as a toy.
38. This appliance is intended to be used in household and similar applications such as: staff kitchen areas in shops, offices and other working environments; farmhouses; by clients in hotels, motels and other residential type environments; bed and breakfast type environments.
39. Do not put water over the Max level to avoid spillage on the connector.
40. Please do not use appliances for any other purpose other than those described in this manual, otherwise it may cause potential harm caused by misuse.
41. Before it is cleaned, power cord should be unplugged, and it cools down.
42. Do not touch to body to avoid scalding as the temperature is high under working condition

43. Power plug and socket must be dry; do not unplug the power plug using wet hands to avoid electrician shock.
44. Do not rinse the power cord and the main body in or with water to avoid product failure and danger.
45. The aluminum inner cover should not be in contact with acidic substances.
46. Caution: There will be residual heat on the surface of the component after heating. Please be careful.
47. The normal working altitude of this product is below 2000 meters.
48. Please keep instructions for future reference.

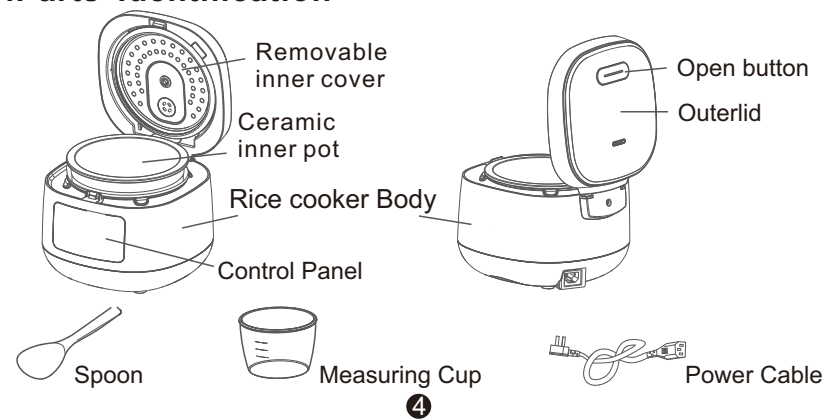
II. Performance and Characteristics

1. Ceramic inner pot, non-cracking and non-stick, easy to clean.
2. Large suspended spiral heating plate that fits into the rice cooker liner, constantly heat for better tasting rice.
3. Ceramic material characteristics, cook more fragrant and crispy claypot rice.
4. All-round 360° temperature sensing system ensures that the soup does not overflow without supervision.
5. One single step to remove the inner lid, disassemble and clean it easily.
6. 24-hour reservation function, customize different meals of you and your family at any time.

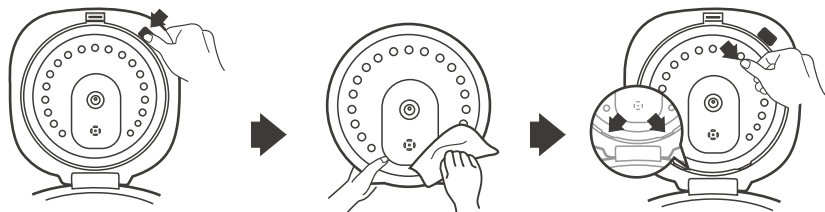
III. Key Technical Parameters

| | |
|-----------------------------------|--|
| Product Name | Electric Multi-Function Ceramic Pot Rice Cooker 2.0L(4 cups) |
| Product Model | AU-K1020 |
| Capacity | 2.0 L |
| Power Supply | 220V-240V ~ 50 Hz |
| Rated Power | 350W-410W |
| Appearance Dimensions (L × W × H) | 267mm × 260 mm × 212 mm |
| Maximum/minimum Rice Cooked | 4 cups/1 cup of rice |

IV. Parts Identification



Remove the inner cover:

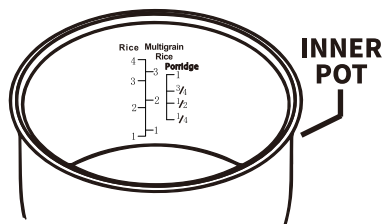


Press the movable inner cover switch until the inner cover pops out.

Remove the removable inner cover for cleaning and wipe dry.

To install before use, put the buckle in place before pressing the inner cover inwards.

1. The ceramic inner pot is only heated in this product.
2. Do not heat the ceramic inner pot directly on fire or on stoves.
3. Avoid contact of ceramic parts with cold water while still hot.
4. The ceramic inner pot is a fragile utensil. Please avoid collision with hard objects or fall from a high place.
5. It is normal for the bottom of the ceramic liner to become brownish with time due to heating under the bottom of the pot.



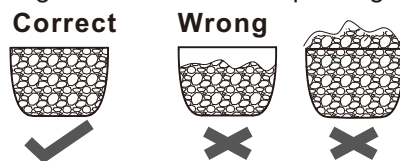
V. Functions

1. Before function selection

1) Standby status: After the rice cooker is energized, the display screen displays "00:00". At this time, the rice cooker is not heated and is in a standby state.

2) Measuring methods:

Please use the measuring cup attached to this rice cooker to measure rice correctly (1 CUP = a flat cup when measuring rice, less or sharp will affect the cooking effect of rice or porridge).



3) Water level adjustment method:

When cooking rice/Multigrain Rice or porridge, select the corresponding water level according to the number of cups of added rice.

For example:

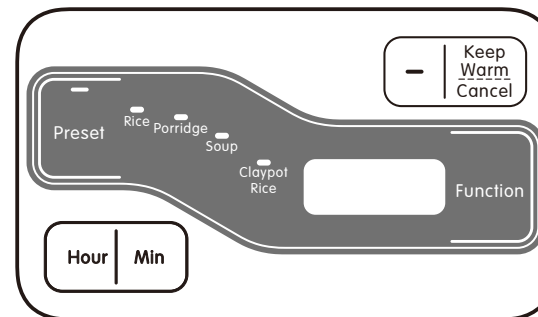
- A. Cooking 4 measuring cups of rice, first put the washed rice into the ceramic inner pot, and add water to the scale mark of "4" on the side marked "CUP Rice".
- B. Cooking 4 measuring cups of Multigrain Rice, first put the washed rice into the ceramic inner pot, and add water to the scale mark of "4" on the side marked "CUP Rice/ Multigrain Rice".
- C. Cooking 1 measuring cup of rice for porridge, first put the washed rice into the ceramic inner pot, and add water to the scale mark of "1" on the side marked "Porridge".

⑤

Note:

- A. The amount of water added can be adjusted appropriately according to individual preferences and the quality of the rice used;
- B. When selecting the "Porridge" function, please do not exceed the highest water level of "porridge" on the ceramic inner pot wall after adding water;
- C. When selecting the "Soup" function, the height of the material after filling water should not exceed the maximum water level of the "Rice" on the wall of the ceramic inner pot;
- D. When choosing "Claypot Rice", it is advised to add a maximum of 2 cups of rice.
- E. Please use another container to wash the rice, pour it into the ceramic inner pot, add water in proportion, and spread the rice evenly in the ceramic inner pot.

2. Operating Instructions



- ① Function operation: Press the "Function" button to select the function, the corresponding indicator light will flash, while the display shows the default time of the function (at this time, for the "porridge" and "soup" functions, press the "Hour" and "Min" buttons again to adjust the timing). After 6 seconds the indicator light will change from flashing to constant on, and the product will start working automatically.
- ② Reservation operation: Press the "Preset" button, the reservation indicator light will flash, then press "Hour" and "Min" to adjust the reservation time. Then press the "Function" button to select the desired function. After 6 seconds the reservation and the selected function indicator light will turn on at the same time and the product will start working automatically. (The preset time should be the cooking completion time. Normally, due to differences in ingredients and ambient temperature, the completion time could be slightly earlier than the preset time.)
- ③ Keep Warm operation: Press the "Keep Warm/Cancel" button, the keep warm indicator light will flash. After 6 seconds the indicator light will change from flashing to constant on, the product will start working automatically and the display will start timing from "00:00". After 8 hours of keeping warm, the product will change to stand-by mode.
- ④ Cancel operation: Press the "Keep Warm/Cancel" button while the product is working, the product will stop working and change to the stand-by mode.
- ⑤ The default time of each function:

⑥

| Function | Rice | Porridge | Soup | Claypot Rice |
|---------------------|------|----------|------------|--------------|
| Default Time (Hour) | / | 1h | 2h | / |
| Function | / | 50min-2h | 1h30min-4h | / |

VI. Cleaning and Maintenance

1. Cleaning method

- 1) Be sure to unplug and carry out these operations when the appliance is cooled down.
- 2) Kitchen detergents must be used.
- 3) Do not wipe with chemicals, hard brushes, stainless steel wire balls, etc.
- 4) The ceramic inner pot should be wiped with clean soft cloth or towel. During the cleaning process, do not wipe with hard steel wire to avoid damaging the surface. Except for ceramic inner pot, movable inner cover and steam hood assembly, do not immerse the power cord and products into water or flush, so as to avoid water inflow of electrical appliances and failure, which may affect safe use.
- 5) Do not soak or rinse the pot body with water and wipe with a well-wrung cloth.
- 6) After each use, remove the movable inner cover and steam hood assembly and clean them.
- 7) After use, clean it in time to prevent some dirt from adhering to the surface of the parts and being difficult to remove.

2. Storage



If the product is not used for a long time, please clean it and put it into the packing box. It should be stored in a dry place.

3. Troubleshooting

| No. | Failure | Reason | Method |
|-----|---------------------------------|---|---|
| ① | No power on (display not on) | Power plug not plugged in | Check whether the power plug is plugged into place |
| | | ---- | Please send it to our local service outlets for repairs |
| ② | Rice or porridge is undercooked | Too little water | Adjust the amount of water added |
| | | Dirt on the bottom of ceramic inner pot | Clean with a wet towel |
| | | The outer lid is not securely closed. | Close the outer lid securely |
| | | ---- | Please send it to our local service outlets for repairs |

| No. | Failure | Reason | Method |
|-----|---|---|--|
| ③ | Cook rice/ porridge to bottom burning | Too little water | Adjust the amount of water added (according to the water absorption of the rice, the amount of water added increases or decreases) |
| | | Voltage too high | Use of domestic regulated power supply |
| | | Dirt on the bottom of ceramic inner pot | Clean with a wet towel |
| ④ | Overflow in cooking rice, porridge, or soup | Too much water and rice | Fill water as required by water level scale |
| ⑤ | Functional failure | Power issue | Unplug the power cord for 20 seconds, then plug in again. Make sure the connect is going well |
| | | ---- | Please send it to our local service outlets for repairs |
| ⑥ | Show E1 or E3 | ---- | Please send it to our local service outlets for repairs |
| ⑦ | Show E2 or E4 | Anhydrous dry fire in ceramic inner pot | After the ceramic pot is cooled, fill water and food before stewing |
| | | ---- | Please send it to our local service outlets for repairs |

4. Do not disassemble or repair this product for non-professional personnel.
5. If the power cord is damaged, it must be replaced with special cord or special components purchased from our supplier or maintenance department.
6. If the product fails and cannot be remedied, do not repair it by yourself. Please contact our customer service department to solve the problem.
7. Ceramics are fragile products and not covered by warranty. Please use them carefully.
8. This product is for home use only.

目錄

| | |
|---------------|----|
| 一、注意事項----- | 10 |
| 二、產品性能特點----- | 12 |
| 三、主要技術參數----- | 12 |
| 四、部件名稱介紹----- | 12 |
| 五、使用方法----- | 13 |
| 六、保養及維護----- | 15 |

使用產品前，請仔細閱讀本說明書

一、注意事項

- 1.請閱讀所有的使用說明。
- 2.請使用與銘牌所標電壓值一致的交流電源。
- 3.請使用有合格保護接地的電源，以確保人身安全。
- 4.不要放在易燃易爆的物品附近或表面使用；不要放在潮濕或靠近其他熱源的的地方使用，以免發生故障和危險。
- 5.使用本產品時應放置在兒童接觸不到的穩固平臺上。
- 6.產品工作時會冒出蒸汽，切勿將臉或手靠近蒸汽口，以免燙傷；怕蒸汽的物體不要置於本產品上方；切勿將抹布或類似物品覆蓋在蒸汽口上，以避免引發意外或導致產品故障。
- 7.產品工作時，外殼溫度較高，請勿觸摸，以免燙傷。
- 8.本陶瓷內鍋只限於在本產品中加熱，不要將陶瓷內鍋直接放在明火上加熱或置於其他爐具上進行加熱。並避免陶瓷件在較熱時接觸冷水，以免發生爆裂。
- 9.加水量應在最低水位線與最高水位線之間。加水過少或過多，都可能出現故障和危險。
- 10.插入電源線時，必須插到底，以確保接觸良好。
- 11.應經常保持電源插頭、插座的乾燥，禁止用濕手插拔電源插頭，以防止觸電。
- 12.產品在通電工作時，請勿移動。
- 13.產品在通電工作時，內部可能會發出輕微的“嗒、嗒”響聲，這是器具調整火力的聲音，不影響正常工作。
- 14.在工作狀態下按動“Keep Warm/ Cancel”鍵，產品將回到待機狀態，即顯示幕顯示“00:00”。如果產品正處於工作狀態還沒自動完成整個加熱過程時，中途按“Keep Warm/ Cancel”鍵強制停止加熱後，又想再啟動該功能繼續加熱時，原陶瓷內鍋裏面的食物可能會因多次加熱而引致燒焦或出現其他異常現象，請在日常使用過程中儘量避免此種情況的操作。
- 15.若中途斷電，產品將回到待機狀態，需重新設置，才能繼續工作。
- 16.加開水煮飯/煮粥並不能縮短燉煮時間，只會使飯夾生或粥煮得更爛，請注意使用。
- 17.產品工作完成後，此時陶瓷內鍋的溫度很高，請不要接觸陶瓷內鍋，防止燙傷。
- 18.產品第一次使用時，發熱體可能發出輕微異味；另顯示幕在剛通電時可能顯示閃爍，請拔下插頭後重新通電；此兩種現象屬正常現象，請放心使用。
- 19.陶瓷內鍋為易碎器皿，慎防與硬物碰撞及從高處跌落，造成破碎損壞。
- 20.燉煮食物或煮粥時，食物對水或米對水的比例不能過高，否則容易造成煮幹、燒糊等現象，嚴重時將會影響陶瓷內鍋的使用壽命。

21. 建議煮煲仔飯時，最高米量不要超過3杯米。較慢煮熟的食材，如肉類、豆類宜開始烹飪前放入鍋中；較快煮熟的食材，如蔬菜類可以等煲仔飯過程中提示五組"Di-Di-Di"聲才加入鍋內。
22. 外鍋內請勿注水。使用前將陶瓷內鍋外側（尤其是底部）及電飯煲內側的水珠擦拭乾淨，確認底部沒有雜物後，再將陶瓷內鍋放入，輕壓到位後請稍為左右旋轉，使底部接觸良好。
23. 請將上蓋確實扣緊，以免電飯煲因密封不良而影響燉煮及保溫效果。禁止在開蓋狀態和沒有陶瓷內鍋的情況下通電使用，以免引起保險絲熔斷或發生故障及其他事故。
24. 取出陶瓷內鍋前，務必先將電源插頭拔掉。
25. 為了防止觸電，不要將電線、插頭或主機浸泡在水或其他液體中。
26. 在不使用和清洗前，請從插座拔出電線。允許冷卻之前，可將可分離的部件取下。
27. 不要使用已有損壞的電線使用該產品，或在此電器已有故障或有任何損壞時插電使用。應當就近送到有授權的服務點進行維修。
28. 如果使用製造商不推薦的附件可能造成傷害。
29. 不要在戶外使用。
30. 不要讓電線懸掛在桌子或櫃檯的邊緣，或觸摸熱表面。
31. 不要放置在熱氣體或電燃燒器上或附近，或在加熱爐中。
32. 在移動含有熱液體的產品時必須格外小心。
33. 始終先將插頭連接到產品上，然後將插頭插入牆上插座。斷開連接時，將任何控制轉換為“關閉”，然後從牆上的插座上拔出插頭。
34. 不將此產品另作他用。
35. 注意-觸電風險。只能在可移卸的容器中烹調。
36. 本產品並非設計供給身體，感官或精神有缺陷，或者缺乏經驗和缺乏必要知識的人員（包括兒童）使用，除非負責其安全的人員給與監督或就設備使用提供安全指導。
37. 兒童應受到監督，以確保他們不會將此產品當成玩具使用。
38. 本產品適用於家庭和類似環境的應用，例如：商店，辦公室和其他工作環境中的員工廚房區域；農舍；由酒店，汽車旅館和其他住宅類型環境的客戶提供；床和早餐類型的環境。
39. 請勿將水放在Max（最大）水準以避免溢出連接器。
40. 請勿將本產品用於本手冊中所述之外的任何其他用途，否則可能會導致因誤用而造成的潛在傷害。
41. 在清潔之前，應拔掉電源線並將其冷卻。
42. 在產品工作時，溫度較高，請勿接觸身體任何部分以免燙傷。
43. 電源插頭和插座必須乾燥；請勿用濕手拔掉電源插頭，以免觸電。
44. 請勿在水中或用水沖洗電源線和機器主體，以免產品損壞和危險。
45. 請勿將鋁制內蓋與酸性物質接觸。

46. 請注意：加熱後元件表面會有餘熱，請小心。
47. 本產品正常工作的海拔高度為2000米以下。
48. 請保存好說明書以備參考。

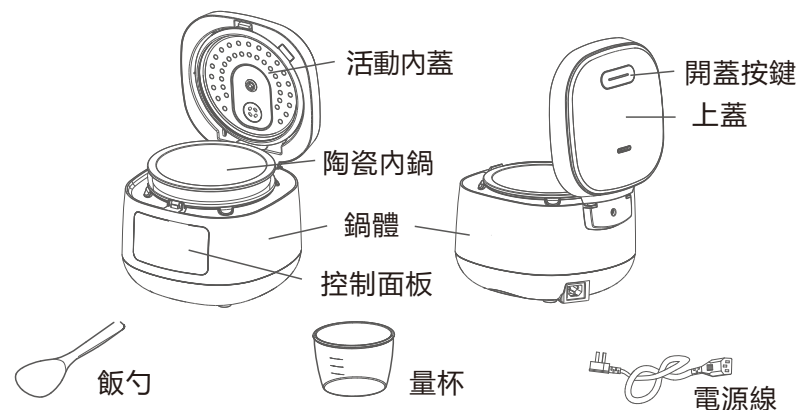
二、產品性能特點

1. 冰燄全瓷內膽，冷熱不裂，健康不粘，清洗方便；
2. 懸浮大螺紋發熱盤，貼合內膽，持續均勻加熱，米飯更透芯；
3. 陶瓷材質特性，煮出更香更脆的煲仔飯；
4. 全方位精準感溫系統，粥湯不溢，免看管；
5. 一鍵拆卸內蓋，拆洗方便，細菌無處可藏；
6. 24小時預約功能，隨時定制一家三餐。

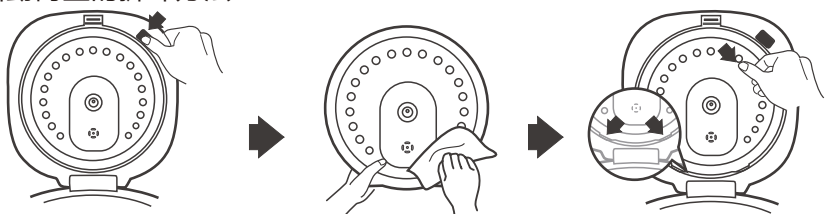
三、主要技術參數

| | |
|-------------|--------------------------|
| 產品名稱 | Kylin麒麟微電腦陶瓷電飯煲2.0L (4杯) |
| 產品型號 | AU-K1020 |
| 容量 | 2.0 L |
| 電源 | 220V-240V ~ 50 Hz |
| 額定功率 | 350W-410W |
| 外觀尺寸（長×寬×高） | 267mm x 260mm x 212mm |
| 煮飯最高/最低米量 | 4杯米/1杯米 |

四、部件名稱介紹



活動內蓋的拆卸方法：

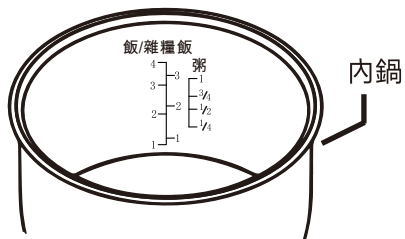


按壓活動內蓋開關，直至內蓋彈出

取下活動內蓋清洗後搽拭乾淨

使用前安裝時，先把扣位裝上再往裏按壓內蓋

1. 陶瓷內鍋只在本產品中加熱。
2. 請勿將陶瓷內鍋直接放在火上或火爐上加熱。
3. 避免陶瓷部件在還熱時與冷水接觸。
4. 陶瓷內鍋是易碎器具。小心避免與硬物碰撞或從高處墜落。
5. 陶瓷內鍋的底部會隨著時間的推移而變成褐色，這屬於正常現象。



五、使用方法

1. 功能選擇之前

1) 待機狀態：電飯煲通電後，顯示幕顯示“00:00”，此時電飯煲不進行加熱，處於待機狀態。

2) 量米的方法：

請使用本電飯煲所附量杯正確量米（量米時1CUP=一平杯，較少或冒尖都會影響煮飯或煮粥效果）



3) 水量調整方法：

煮米飯/雜糧飯或煮粥時，根據所加米的杯數選擇對應的水位線。

例如：

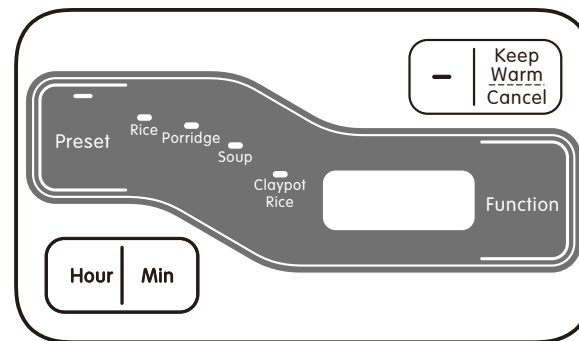
- a. 煮4計量杯的米飯，先把淘洗乾淨的米倒入陶瓷內鍋，加水至標有“飯”側的水位刻度線“4”處；
- b. 煮4計量杯的雜糧飯，先把淘洗乾淨的米倒入陶瓷內鍋，加水至標有“雜糧飯”側的水位刻度線“4”處；
- c. 煮1計量杯的粥，先把淘洗乾淨的米倒入陶瓷內鍋，加水至標有“粥”側的水位刻度線“1”處。

注意：

A. 根據個人喜好和所用米質的不同，可以適當調整所加的水量；

- B. 當選擇“Porridge”功能時，米加水後的高度請不要超過陶瓷內鍋壁上“粥”的最高水位線；
- C. 當選擇“Soup”功能時，材料加水後的高度請不要超過陶瓷內鍋壁上“飯”的最高水位線；
- D. “Claypot Rice”功能水位請參照“飯”的水位線。
- E. 請用其他容器將米洗淨，倒入陶瓷鍋中，按比例加入清水，攤平大米使之在陶瓷內鍋中分布均勻。

2. 操作說明



- ① 功能操作：按“功能”鍵選擇功能，相應的指示燈閃亮，同時顯示屏顯示該功能的默認時間(此時“煮粥”“煲湯”功能，可再按“時”“分”鍵，調整定時時間)，6秒鐘後指示燈常亮，產品開始工作。
- ② 預約操作：先按“預約”鍵，預約指示燈閃亮，再按“時”和“分”調整預約時間，最後按“功能”鍵選擇所需功能，6秒鐘後預約和所選功能指示燈同時常亮，產品開始工作。(預約設置時間即烹飪完成時間。由於食材和環境溫度等存在差異，完成時間有可能比設置時間稍有提前。)
- ③ 保溫操作：按“保溫/取消”鍵，保溫指示燈閃亮，6秒鐘後指示燈常亮，產品開始工作，顯示屏從“00:00”開始計時。保溫8小時後，產品轉待機。
- ④ 取消操作：產品工作中按“保溫/取消”鍵，產品停止工作，進入待機狀態。
- ⑤ 功能默認時間如下表

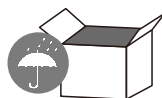
| 功能 | 煮飯 | 煮粥 | 煲湯 | 煲仔飯 |
|----------|----|----------|------------|-----|
| 默認時間(小時) | / | 1h | 2h | / |
| 可定時范围 | / | 50min-2h | 1h30min-4h | / |

六. 保養和維護

1. 清洗方法

- 1) 產品使用後，必須拔掉插頭，然後待鍋體完全冷卻後再開始清洗。
- 2) 洗潔劑必須使用廚房用洗潔劑。
- 3) 不要用香蕉水、汽油、去污粉、硬質刷、不銹鋼絲球等來擦拭。
- 4) 陶瓷內鍋宜用乾淨軟布或毛巾類擦拭，清洗過程中切勿使用硬質鋼絲擦洗，以免損壞表面。除陶瓷內鍋、活動內蓋及蒸汽罩元件外，切勿將電源線、產品整體浸入水中或沖洗，以免電器進水，產生故障，影響安全使用。
- 5) 鍋體切勿水浸或用水淋洗，可用柔軟濕布（擰乾水）抹擦。
- 6) 每次使用後請取下活動內蓋及蒸汽罩元件並清洗乾淨。
- 7) 用完後應及時清洗，防止一些污垢緊緊地附著在部件表面而難於去除。

2. 保存方法



產品長期不使用時，請清潔乾淨後，裝入包裝箱中，應存放於通風乾燥的地方，以免受潮，影響使用。

3. 故障及排除

| 序号 | 故障現象 | 故障原因 | 排除方法 |
|----|-------------|--------------|--------------------------|
| ① | 不通電（顯示屏不亮） | 電源線插頭沒插好 | 檢查電源線插頭是否插緊到位 |
| | | | 請送給我司設立在當地的特約維修網點維修 |
| ② | 飯、粥煮不熟（或夾生） | 加水量太少 | 調整加水量 |
| | | 陶瓷內鍋底部髒汙或有異物 | 用濕毛巾清潔乾淨 |
| | | 上蓋未蓋緊 | 將上蓋蓋緊 |
| | | | 請送給我司設立在當地的特約維修網點維修 |
| ③ | 煮飯、煮粥底部燒焦 | 加水量太少 | 調整加水量（根據米的吸水性不同，加水量有所增減） |
| | | 電壓太高 | 使用家用穩壓電源 |
| | | 陶瓷內鍋底部髒汙或有異物 | 用濕毛巾清潔乾淨 |
| ④ | 煮飯，煮粥或燉湯時溢出 | 加水加米量太多 | 按水位標刻度要求加水加米 |
| ⑤ | 功能失效 | 電源干擾 | 拔掉電源插頭20秒後，再重新通電 |
| | | | 請送給我司設立在當地的特約維修網點維修 |
| ⑥ | 顯示E1或E3 | | 請送給我司設立在當地的特約維修網點維修 |
| ⑦ | 顯示E2或E4 | 陶瓷內鍋內無水幹燒 | 等陶瓷內鍋冷卻後，加入水和食物後再進行燉煮 |
| | | | 請送給我司設立在當地的特約維修網點維修 |

4. 非專業人員切勿拆卸、修理本產品。

5. 如果電源軟線損壞，必須用專用軟線或從我司供銷商或維修部買到的專用元件來更換。

6. 當產品出現故障且無法排除時，切勿自行維修，請與我司設立在當地的特約維修網點或與本公司客戶服務部聯繫解決。

7. 本產品中的陶瓷件為易碎品，不在保修範圍內，請小心使用。

8. 其他維修服務需由授權點進行。

9. 本產品僅供家庭使用。

VII. 12 MONTH WARRANTY

In Australia our goods come with guarantees that cannot be excluded under the Australian Consumer Law. You are entitled to a replacement or refund for a major failure and for compensation for any other reasonably foreseeable loss or damage. You are also entitled to have the goods repaired or replaced if the goods fail to be of acceptable quality and the failure does not amount to a major failure.

In New Zealand our goods come with guarantees that cannot be excluded under the Consumer Guarantees Act 1993.

So, as well as your statutory rights referred to above and any other rights and remedies you may have under any other laws relating to your Kylin product, we also provide you with a Kylin warranty. It's important to note that this warranty is valid only in the country of purchase.

Kylin guarantees this product against defects caused by faulty workmanship and materials for 12 months domestic use (or 3 months commercial use) from the date of purchase. During this warranty period, Kylin will repair any defective product. If the product includes a number of accessories, only the defective part or accessory will be replaced. Kylin reserves the right to make minor adjustments instead of replacing the product or accessory. Packaging, instructions, recipes etc will also not be replaced unless faulty.

In the event of a product or accessory being replaced during the warranty period, the warranty on the replacement product will expire 12 months from the purchase date of the original product, not 12 months from the date of the replacement.

To the extent permitted by law, this Kylin 12 months warranty excludes liability for consequential loss or any other loss or damage caused to property or persons arising from any cause whatsoever. It also excludes defects caused by the product not being used in accordance with Instructions, accidental damage, misuse, or being tampered with by unauthorised persons, excludes breakables such as glass and ceramic items, consumable items and normal wear and tear and does not cover the cost of claiming under the warranty or transporting the goods to and from the place of purchase.

Should you suspect your product may be defective and need some clarification or advice, or you have any questions, ideas, or concerns, please contact us directly on:

Kylin Customer Service Australia +61 (0) 3 9988 3693

If you're certain your product is defective, and the product is covered by the terms of this warranty, you need to take the defective product back to the place you purchased it from, where the retailer will replace the product for you on our behalf. In this event, per the terms of this Kylin 12 month warranty, you will need to present this portion of the warranty page and the purchase receipt as proof of purchase so please make sure you keep both this page and your receipt on hand for the duration of the warranty period.

And if for any reason you wish to contact us, please do so at:

Kylin Customer Service Australia +61 (0) 3 9988 3693